

ACIT Economic Outlook Forum Coastal Bend Industry Association

30 November 2023



Coastal
Bend
Industry
Association



Coastal Bend Industry Association



A regional association of 20 manufacturing & industrial companies whose mission is to engage with our communities on issues that contribute to industry vitality, economic stability, and a good business climate; and to partner with communities and organizations in the Coastal Bend to improve regional quality of life.

CBIA Member Companies by Industry Segment

Refining



Chemicals



Midstream



Materials



Strategic



BOUNDLESS ENERGY™

Port



Coastal Bend Industry Association

Local Impact

- Support 14,000 direct employees and full time contractors
- \$1,100,000,000+ in direct employee wages & benefits
- Donate 20+ million dollars and provide 20+ thousand volunteer hours every year to non-profit organizations and education
- 1 of every 2 dollars donated to the United Way of the Coastal Bend is provided by a CBIA member company and their employees



Coastal
Bend
Industry
Association

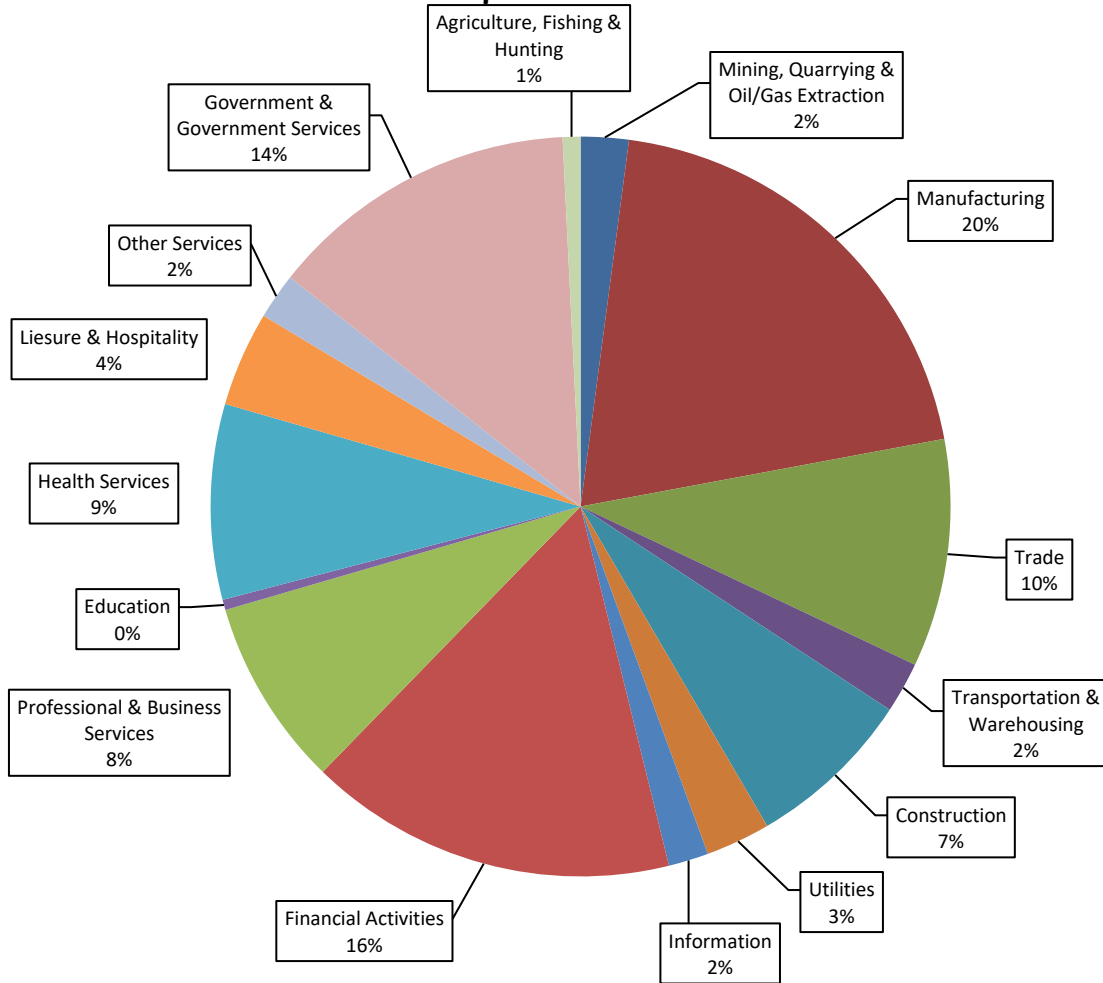
The Coastal Bend's Diversified Economy

- Manufacturing & Trade
 - Military
 - Tourism / Hospitality
 - Agriculture & Ranching
 - Health Care
 - Financial & Professional Services
 - Education
- ...and more

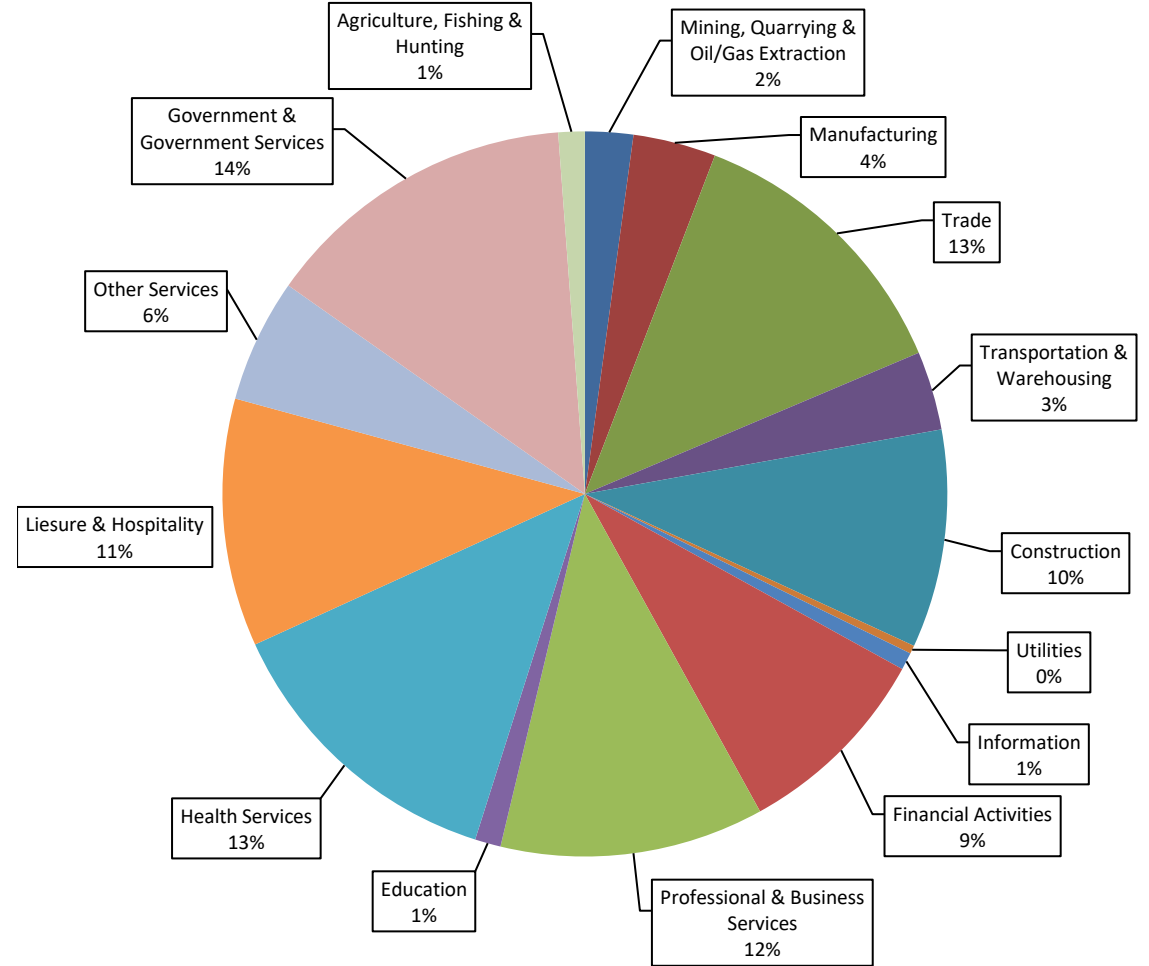


Coastal
Bend
Industry
Association

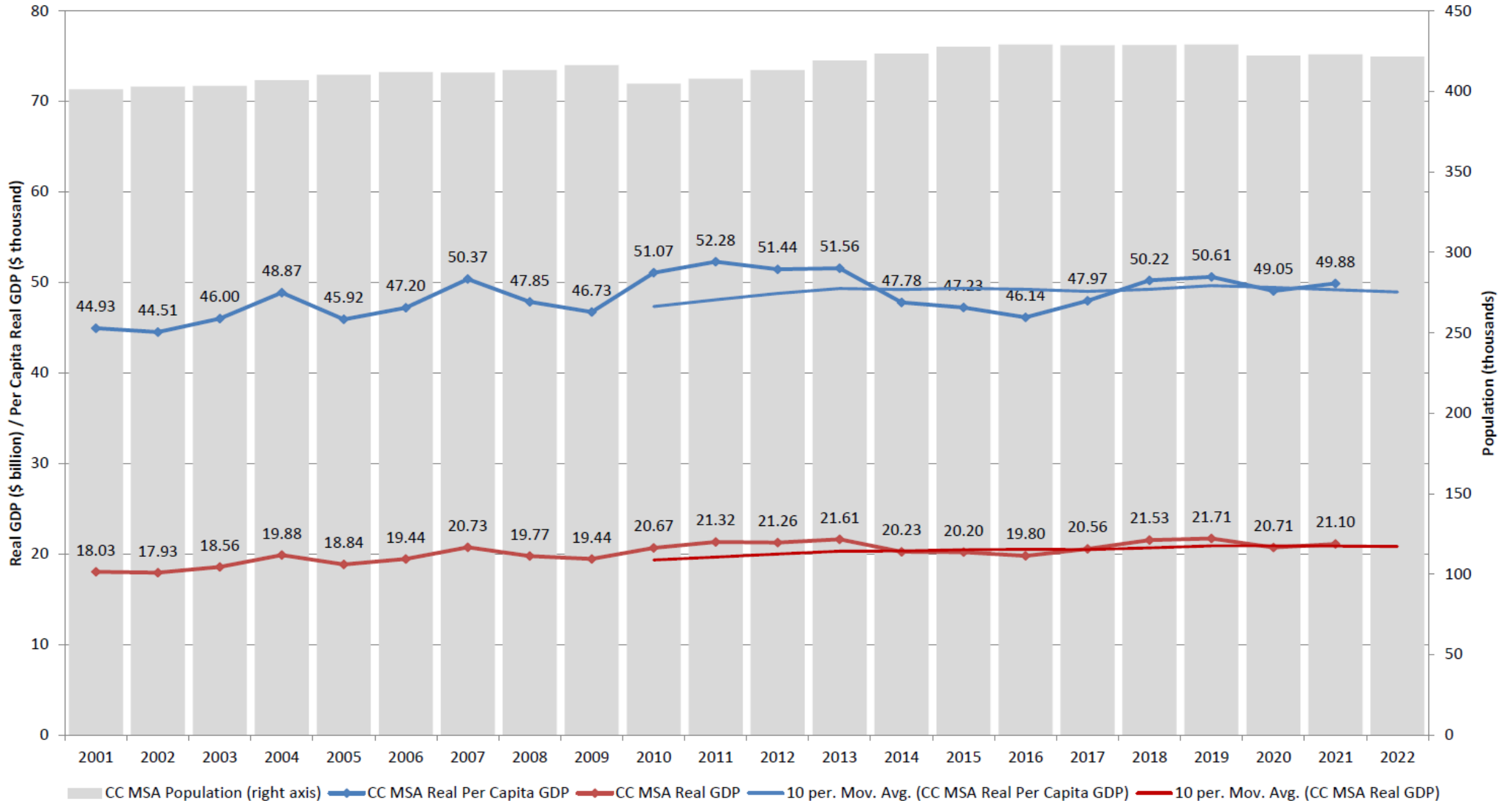
**2021 GDP (nominal) –
Corpus Christi MSA
\$24.9 Billion**



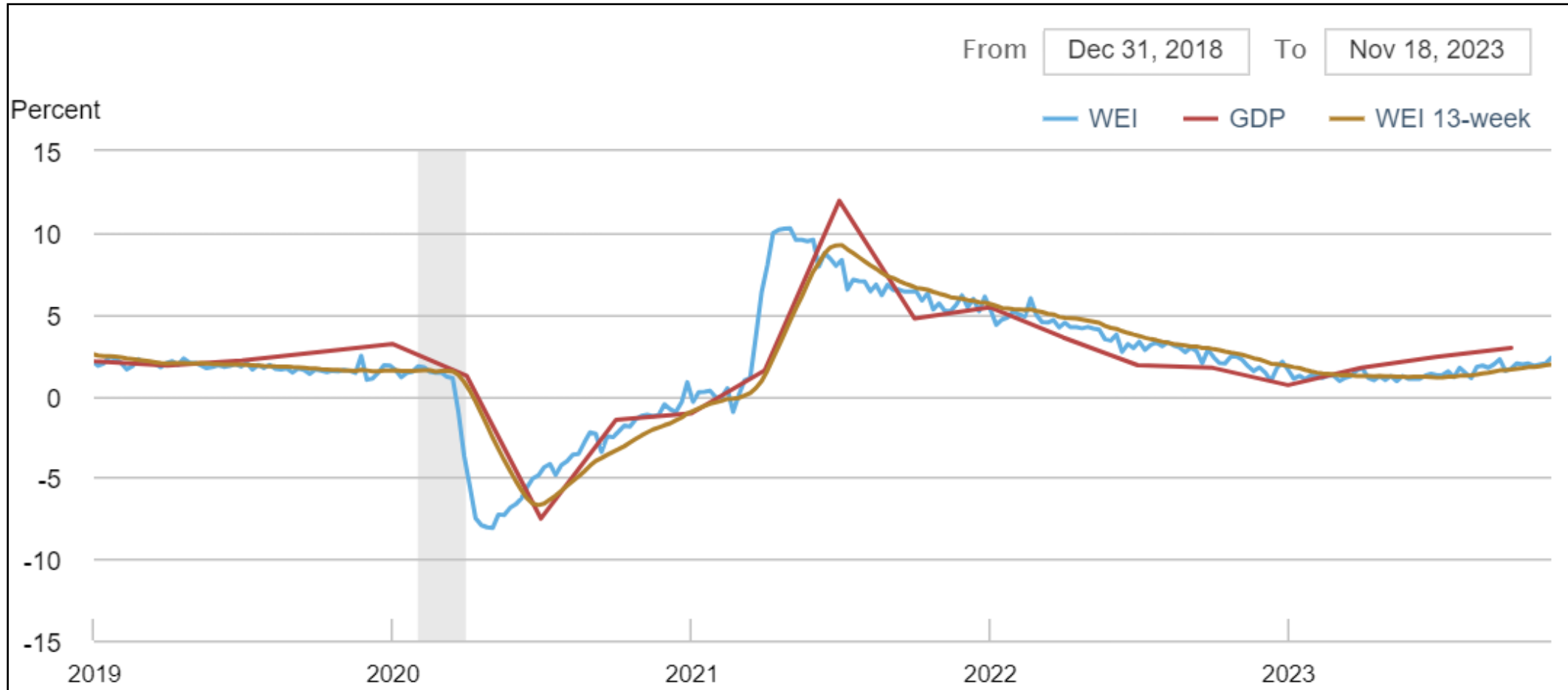
**2021 Employment (full & part time) – Corpus
Christi MSA
243.7 Thousand**



CC MSA Population, Per Capita Real GDP, Real GDP -- 2011 to 2021



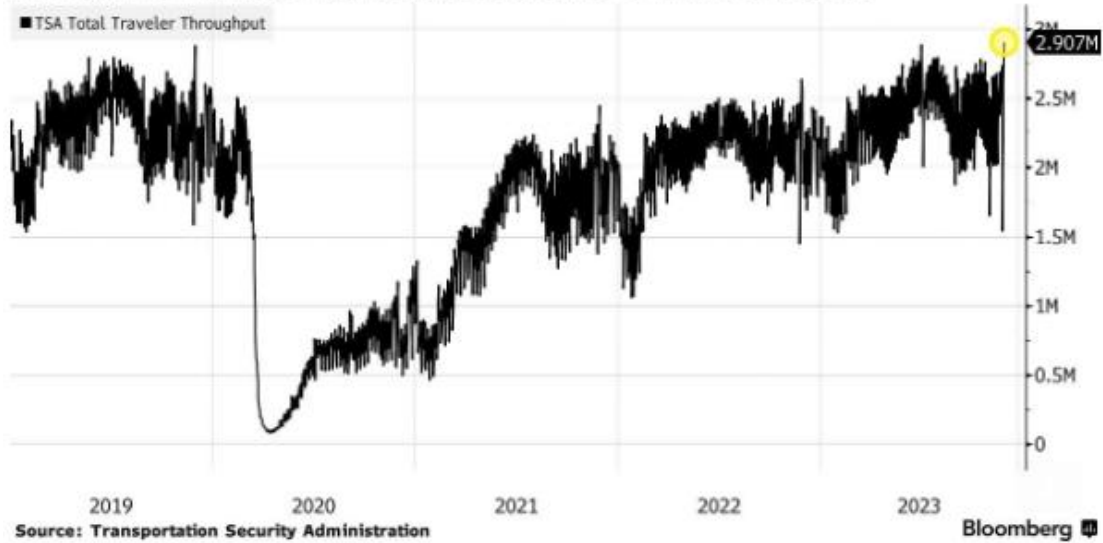
Weekly Economic Index (United States)



Source: New York Federal Reserve Bank

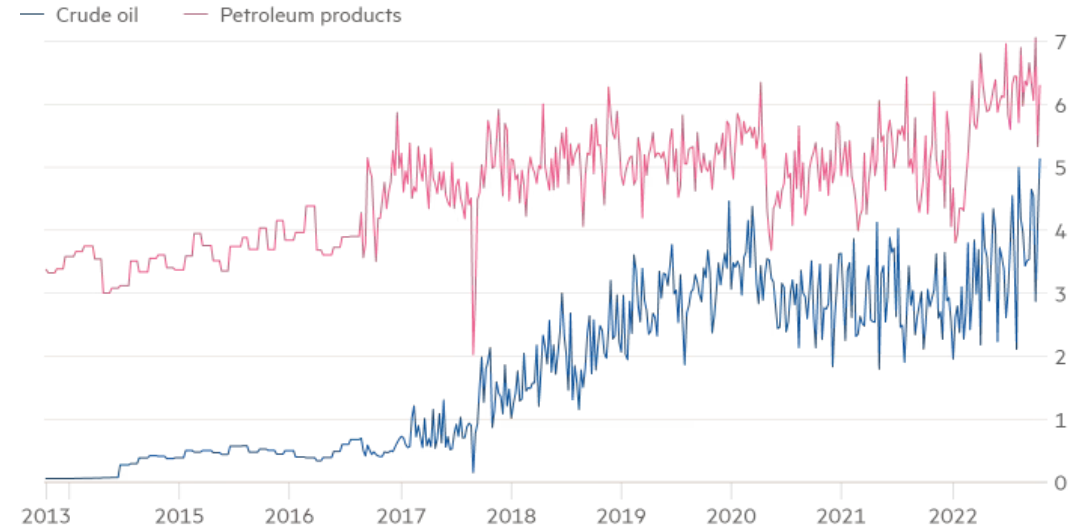
Daily US Air Travel Hits Record

Sunday after Thanksgiving was the busiest day ever at US airports

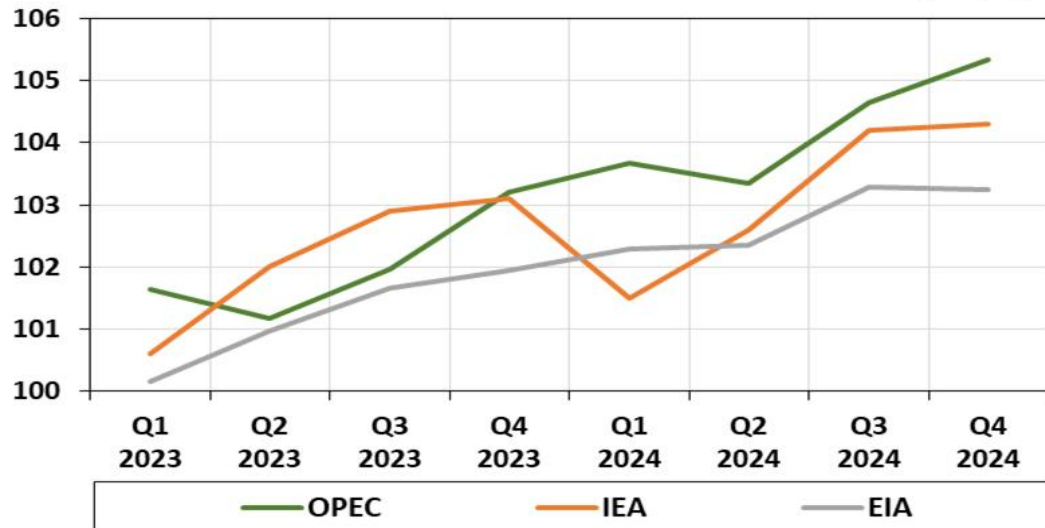


US ships energy to the world

Weekly gross exports (mn b/d)



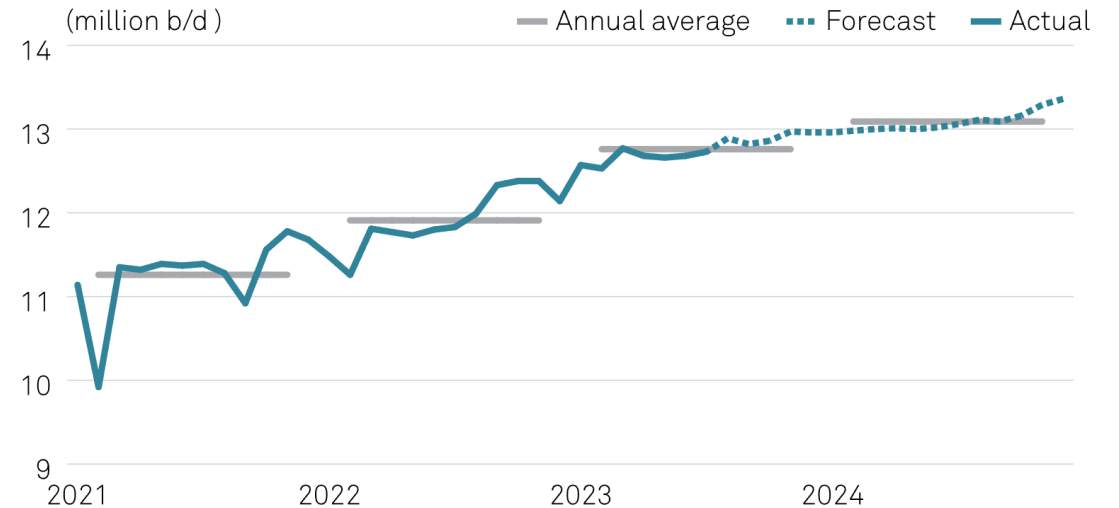
Estimates of Global Oil Demand for 2023 and 2024 (mb/d)



Source: OPEC, IEA, EIA, 2023 and EOA, 2023.

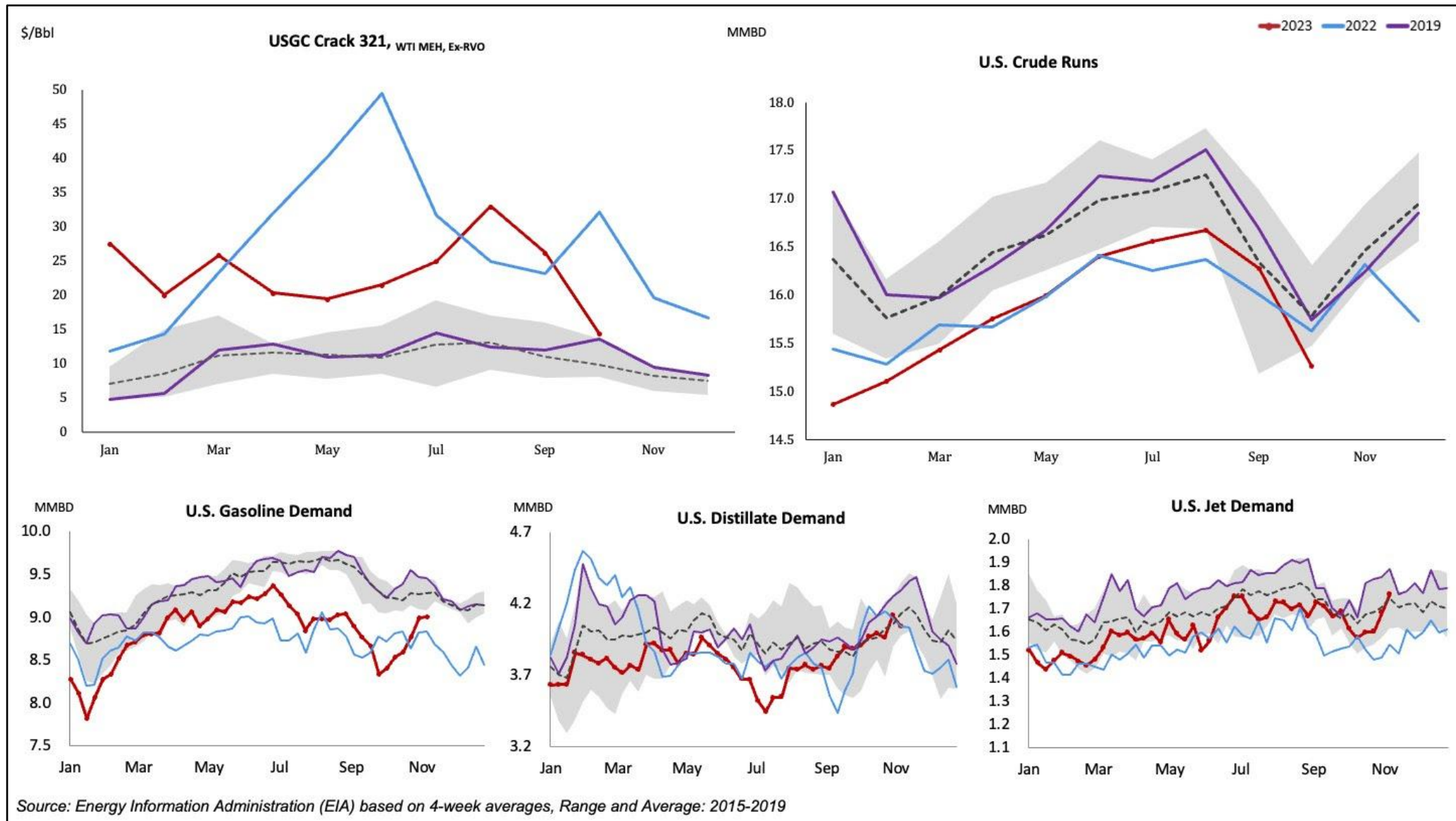
US crude production to hit annual records in 2023, 2024

(million b/d)



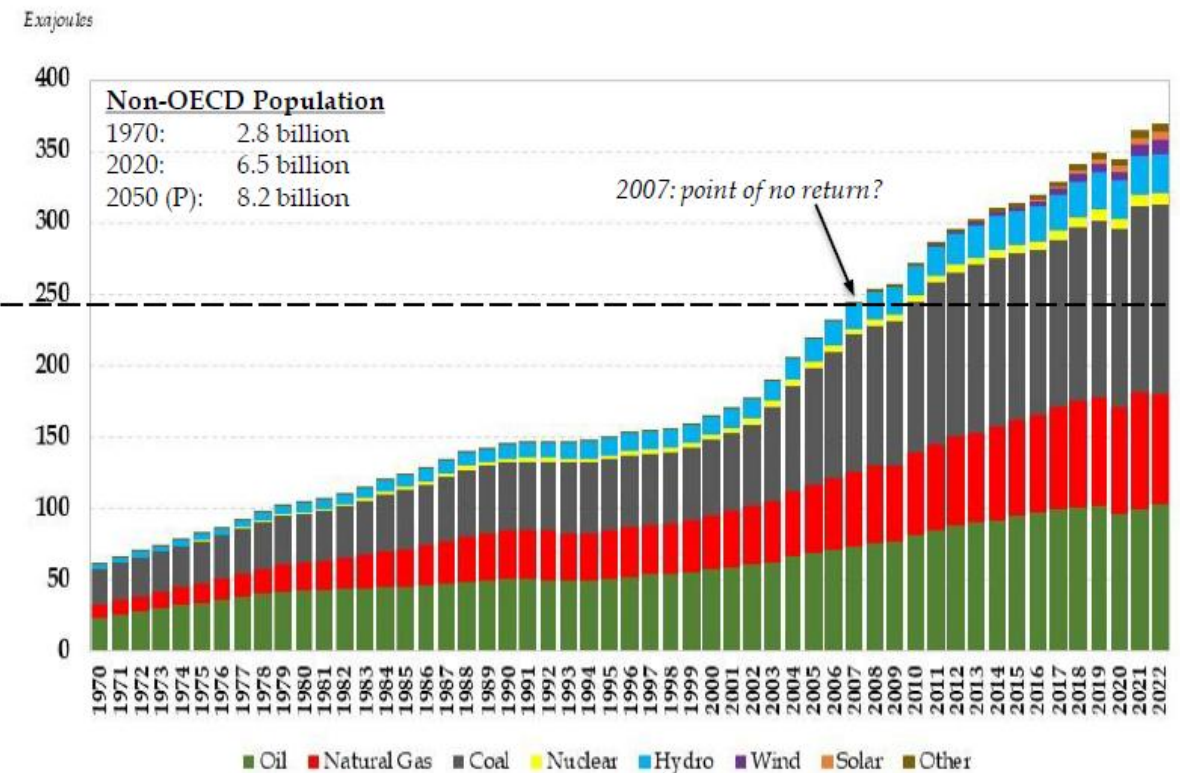
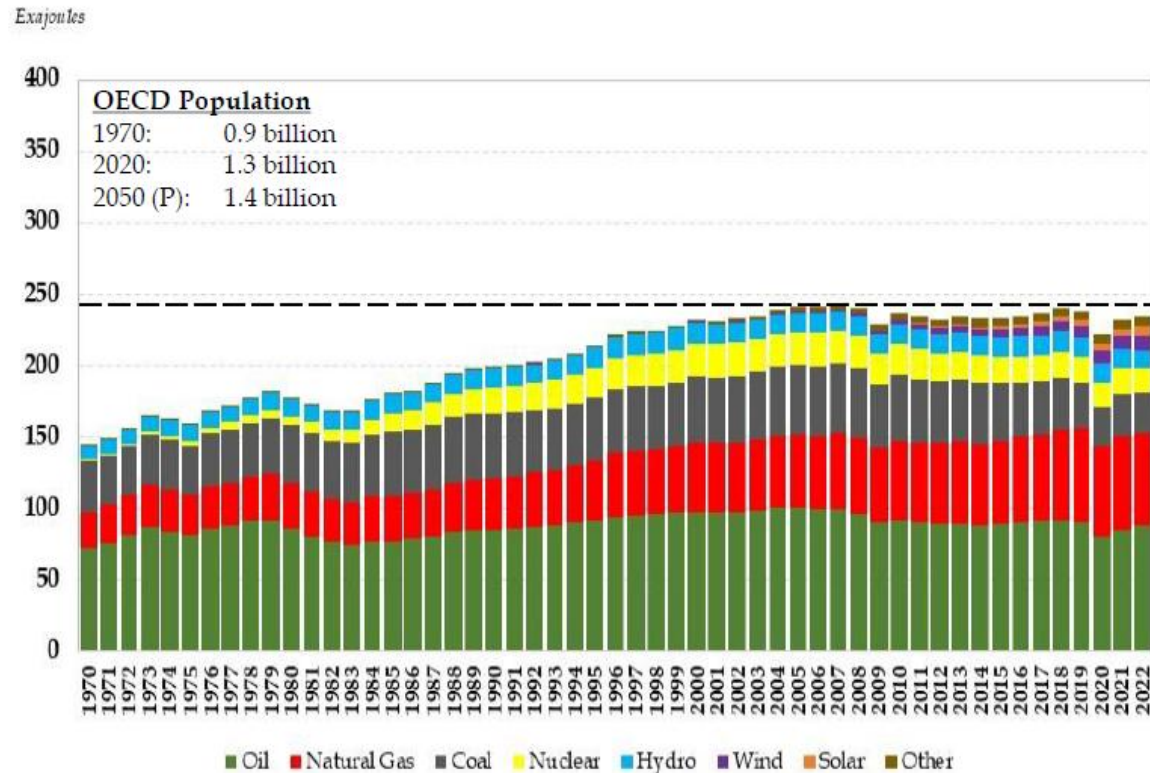
Source: US Energy Information Administration

Refining Dashboard (Nov 2023)

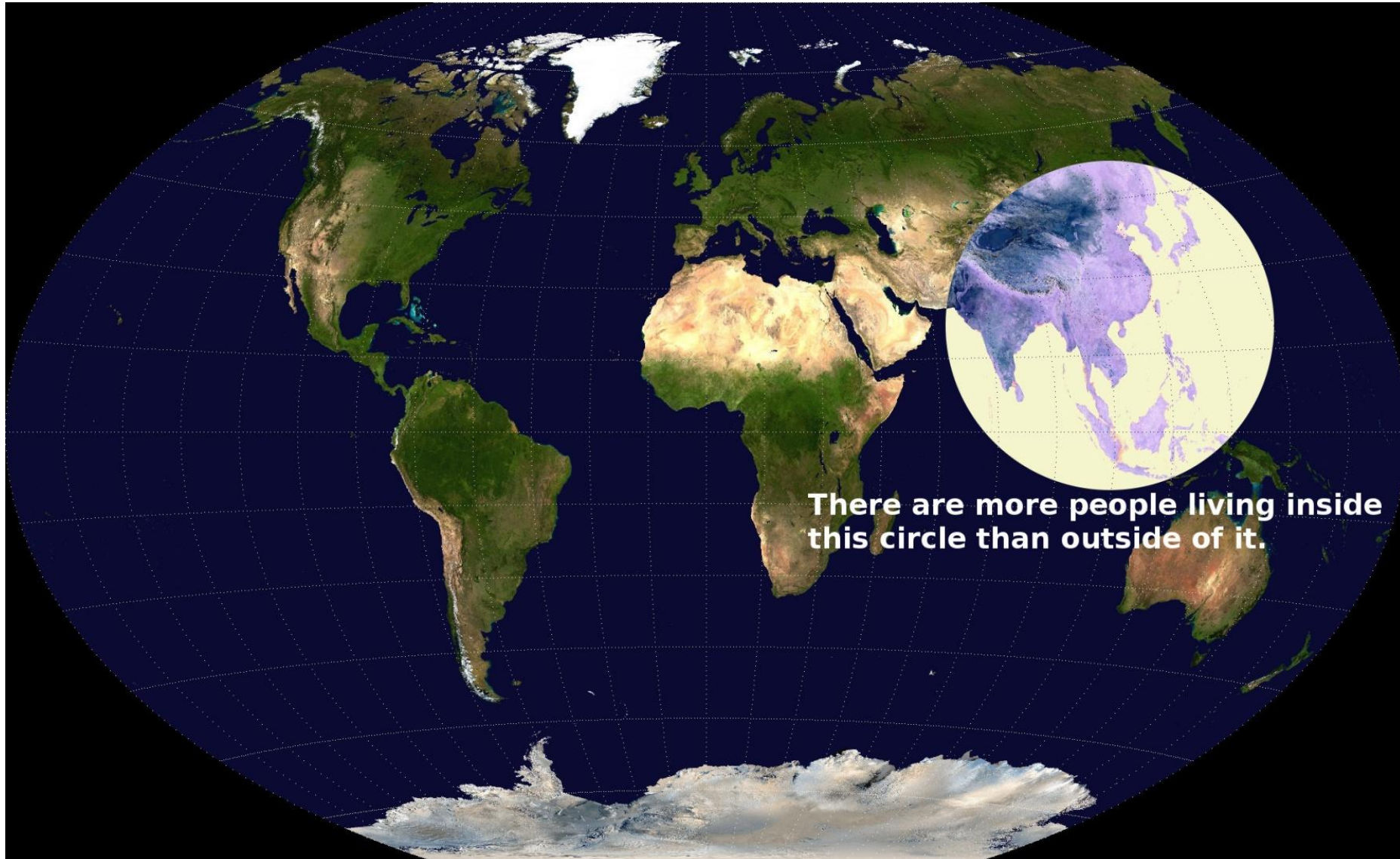


The evolving energy landscape is a developing nation story

- Energy demand is rising fastest in the developing world, largely driven by hydrocarbon fuels.
 - EU is 9.6% of global demand; N. America is 19.6% of global demand; developing Asia is 39.0% of global demand.
- Projections for population and economic growth indicate this trend will likely continue.



Valeriepieris Circle



With That...Let's Jump In



Economic Update

Sarah Tindall
SVP



Corpus Christi
REGIONAL ECONOMIC
DEVELOPMENT CORPORATION





Photo: Corpus Christi Army Depot

Mission Statement

The mission of the Corpus Christi Regional Economic Development Corporation is to expand and enhance the region's economic base by developing and/or supporting projects that create primary jobs to improve the diversity and size of the local economy.



Corpus Christi
REGIONAL ECONOMIC
DEVELOPMENT CORPORATION

What We Do: Single Point of Contact

Site selection process for new primary employers

Advocacy for existing primary employers

Facilitating meetings, as needed, with city, county and port representatives

Coordinating incentive proposals through the approval process

Aiding taxing entities with the formulation of policy

Our Coastal Bend 
Creating our Best Place for People and Prosperity


Corpus Christi
REGIONAL ECONOMIC
DEVELOPMENT CORPORATION



Development Partners



Corpus Christi
REGIONAL ECONOMIC
DEVELOPMENT CORPORATION

City of Corpus Christi

City of Portland

Corpus Christi Black Chamber of Commerce

Port Corpus Christi

Nueces County

San Patricio County

United Corpus Christi Chamber of Commerce

Visit Corpus Christi

Corpus Christi International Airport

Del Mar College

Texas A&M University – Corpus Christi

Bee County Area Development Commission

City of Ingleside

Rockport Chamber of Commerce

San Patricio County Economic Development Council

WorkForce Solutions of the Coastal Bend

Robstown Area Development Commission

What We Do:



**TRACK AND REPORT
LOCAL ECONOMIC DATA**



ACCRA - COST OF LIVING INDEX

COMPARISON OF PORT CITIES	2023 Q3 AVERAGE	2022 ANNUAL AVERAGE	2021 ANNUAL AVERAGE	2020 ANNUAL AVERAGE	2019 ANNUAL AVERAGE
CORPUS CHRISTI MSA	88.8	89.9	94.0	96.4	94.1
HOUSTON, TEXAS	95.3	92.1	94.1	95.2	95.5
SAVANNAH, GEORGIA	92.7	90.1	87.0	88.8	89.2
MIAMI, FLORIDA	115.3	120.6	117.1	116.1	114.4
NEW ORLEANS, LOUISIANA	108.8	111.5	112.2	110.1	104.5
BATON ROUGE, LOUISIANA	92.0	97.0	94.5	96.9	99.0
BALTIMORE, MARYLAND	99.8	108.3	106.5	109.6	112.8

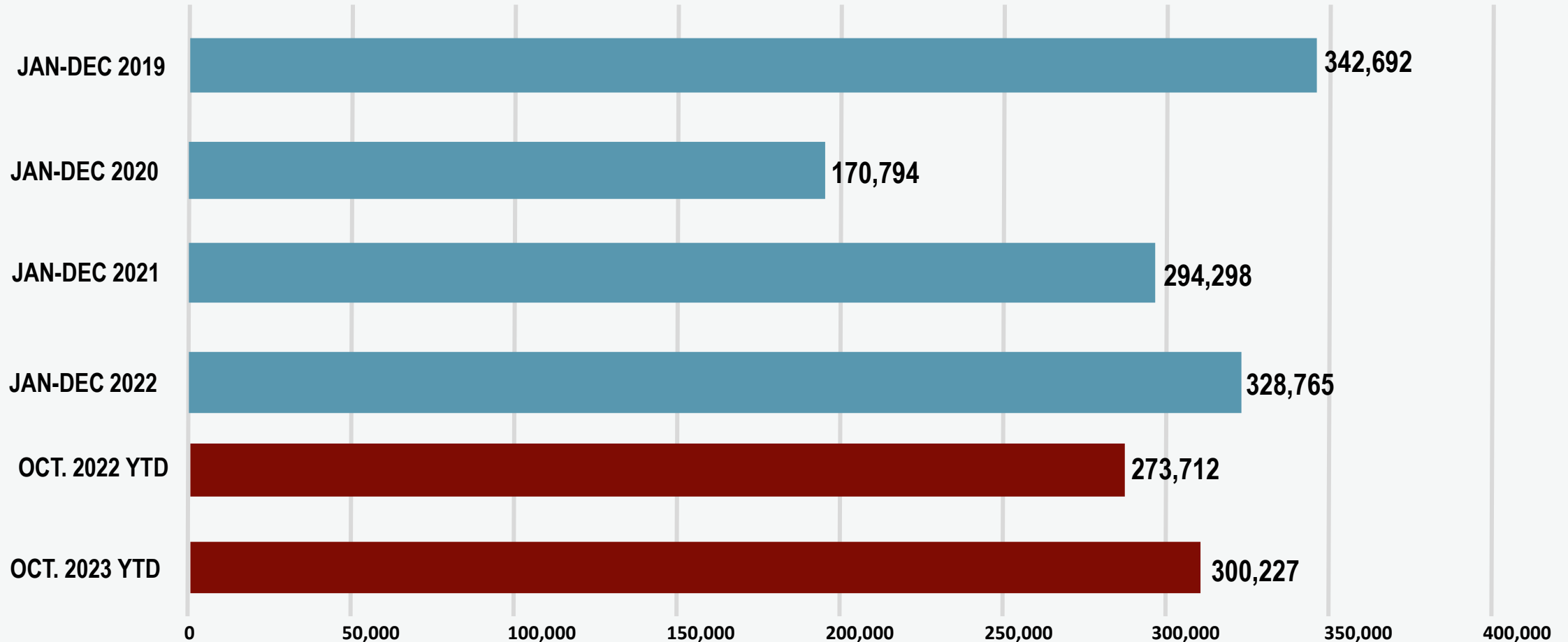
BUILDING PERMITS

City of Corpus Christi	OCT. 2023 Fiscal YTD	OCT. 2022 Fiscal YTD	Fiscal Year 2022	Fiscal Year 2021	Fiscal Year 2020
Residential Permits Issued	52	59	1,312	1,516	1,086
Square Footage	121,794	147,374	3,097,220	3,691,246	2,753,386
Commerical Permits Issued	11	23	102	88	185
Project Cost	\$6,901,173	\$78,693,996	\$184,828,821	\$142,047,389	\$345,491,366
City of Portland	OCT. 2023 Fiscal YTD	OCT. 2022 Fiscal YTD	Fiscal Year 2022	Fiscal Year 2021	Fiscal Year 2020
Residential Permits Issued	100	89	85	60	92
Square Footage	224,436	222,436	209,274	152,401	189,981
Commerical Permits Issued	13	13	13	9	10
Project Cost	\$106,367,240	\$66,486,278	\$66,486,279	\$278,464,080	\$16,094,131

*Please Note The City of Corpus Christi may not require the disclosure of information related to the value of or cost of construction or improving a residential dwelling as a condition of obtaining a building permit except as required by the Federal Emergency Management Agency for participation in the National Flood Insurance Program. The City's fiscal year is from Oct. 1st to Sept. 30.

ENPLANEMENTS

CORPUS CHRISTI INTERNATIONAL AIRPORT



CORPUS CHRISTI M/A HOUSING REPORT



MEDIAN HOME PRICES SOLD
\$268,500 UP 2.9%
COMPARED OCT. 2022



CLOSED SALES
232 DOWN 30.3%
COMPARED OCT. 2022



ACTIVE LISTINGS
1,270 UP 24.9%
COMPARED OCT. 2022

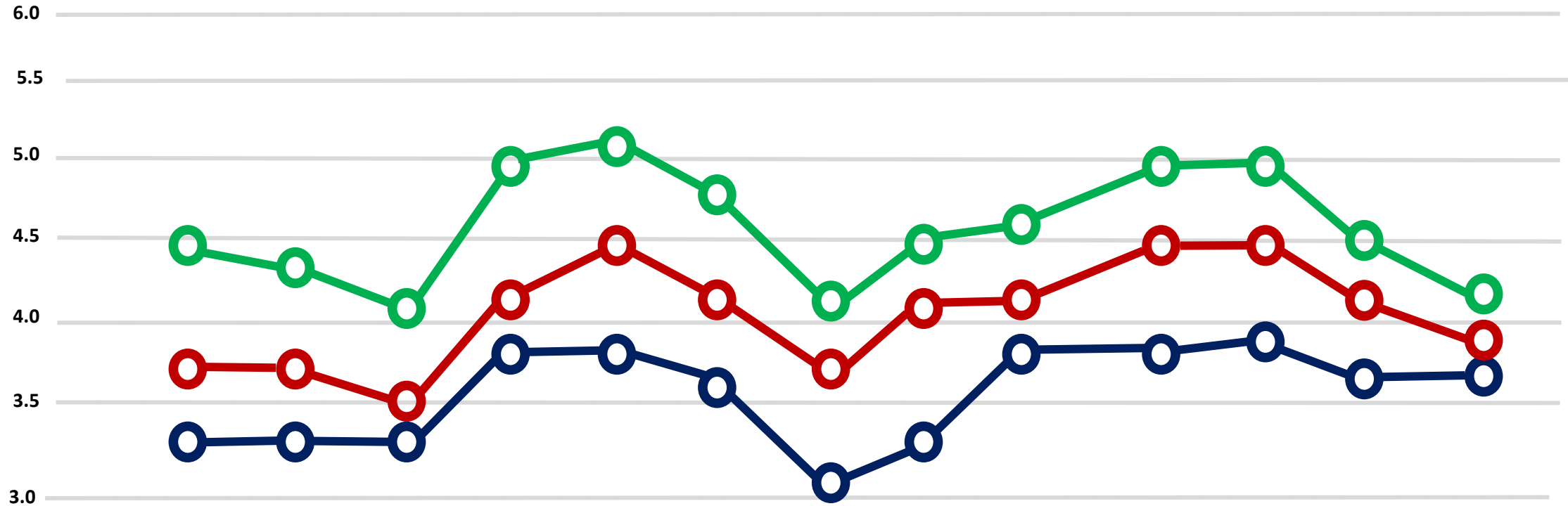


MONTHS OF INVENTORY
4.5 UP FROM 2.7
COMPARED OCT. 2022



DAYS ON THE MARKET: 49
DAYS TO CLOSE: 34
TOTAL DAYS: 83
3 DAYS MORE COMPARED OCT. 2022

MSA UNEMPLOYMENT RATES



	OCT. 2022	NOV. 2022	DEC. 2022	JAN. 2023	FEB. 2023	MAR. 2023	APRIL 2023	MAY 2023	JUNE 2023	JULY 2023	AUG 2023	SEP. 2023	OCT. 2023
CORPUS CHRISTI	4.5	4.4	4.2	5.0	5.1	4.7	4.2	4.5	4.6	5.0	5.0	4.5	4.2
TEXAS	3.7	3.7	3.5	4.2	4.5	4.2	3.7	4.1	4.2	4.5	4.5	4.1	3.8
U.S.	3.4	3.4	3.4	3.9	3.9	3.6	3.1	3.4	3.8	3.8	3.9	3.6	3.6



EMPLOYMENT BY SECTOR FOR SELECTED MONTH/ CORPUS CHRISTI



	OCT 2023	SEPT 2023	OCT 2022	OCT 2021	OCT 2020	MONTHLY CHANGE	YEARLY CHANGE
TOTAL NONAGRICULTURE	196,000	194,300	193,000	186,400	179,300	0.8%	1.5%
MINING, LOGGING & CONSTRUCTION	21,800	21,200	19,200	19,000	19,100	2.8%	6.3%
MANUFACTURING	9,100	8,900	8,300	8,100	7,800	1.1%	5.8%
TRADE, TRANSPORTATION & UTILITIES	34,100	33,900	34,300	33,500	32,000	0.6%	-0.3%
INFORMATION	1,500	1,500	2,700	2,600	2,600	0.0%	0.0%
FINANCIAL ACTIVITIES	9,300	9,400	8,600	8,400	8,100	-1.1%	2.2%
PROFESSIONAL & BUSINESS SERVICES	20,200	19,700	19,700	18,500	17,500	2.0%	0.0%
EDUCATION & HEALTH SERVICES	32,600	32,200	32,100	30,500	31,000	0.6%	3.8%
LEISURE & HOSPITALITY	26,100	26,400	26,900	25,600	22,300	-1.5%	-0.4%
OTHER SERVICES	6,400	6,400	6,300	6,000	5,600	0.0%	3.2%
GOVERNMENT	34,900	34,700	34,900	34,200	33,300	1.5%	-0.9%

SALES TAX COLLECTIONS ALLOCATIONS

	OCTOBER 2023	OCTOBER 2022	SEPTEMBER 2022	2022	2021	2020
CITY OF ALICE	5,955,420	5,494,471	4,903,835	6,664,603	5,627,384	5,286,345
CITY OF ARANSAS PASS	2,519,623	2,401,477	2,168,131	2,898,404	2,743,723	2,516,619
CITY OF BEEVILLE	3,558,089	3,492,128	3,166,140	4,189,005	3,785,579	3,605,444
CITY OF CORPUS CHRISTI	80,972,530	76,844,996	69,041,984	92,547,633	86,039,294	79,718,714
CITY OF GREGORY	407,636	448,264	419,507	519,021	690,915	612,363
CITY OF INGLESIDE	4,116,446	2,589,588	2,325,357	3,184,198	3,214,477	3,786,173
CITY OF PORT ARANSAS	3,234,565	3,213,253	2,837,156	3,839,290	3,372,428	2,687,502
CITY OF PORTLAND	6,328,587	5,753,846	5,231,682	6,830,660	6,399,502	5,735,562
CITY OF ROBSTOWN	1,846,712	1,533,225	1,358,943	1,879,188	1,860,293	1,974,500
CITY OF ROCKPORT	3,082,002	3,054,591	2,738,246	3,665,496	3,243,897	2,864,158
CITY OF SINTON	1,420,040	1,347,634	1,224,560	1,614,741	1,653,229	1,357,784
COMBINED TOTALS:	107,486,230	106,173,473	94,542,802	127,832,241	118,663,365	110,205,722

What We Do:



**ADVOCATE FOR LOCAL
BUSINESSES**



Business Retention and Expansion

Business Retention & Expansion is an economic development strategy of proactively connecting with existing businesses to understand and respond to their needs.

Most of a region's growth comes from the expansion of existing businesses.

Staff conduct interviews with businesses every month to collect data and provide resources for their overall success.



2023 COASTAL BEND MANUFACTURING DAY EXPO

www.cbmfgday.com

2023 COASTAL BEND MANUFACTURING DAY EXPO

FEATURING

State of Manufacturing Luncheon with panelists:
Tesla, Steel Dynamics, LyondellBasell and the
Corpus Christi Army Depot

SPONSORED BY:





COASTAL BEND MARITIME

CAREER EXPO & JOB FAIR





Share your career experience with teachers and students!

The Corpus Christi Independent School District is seeking company representatives to provide input on CTE electives, and volunteers to speak with CTE students about their professions, internship and mentorship opportunities and field trips. To participate, please complete the survey via the QR Code.



**QR
CODE**

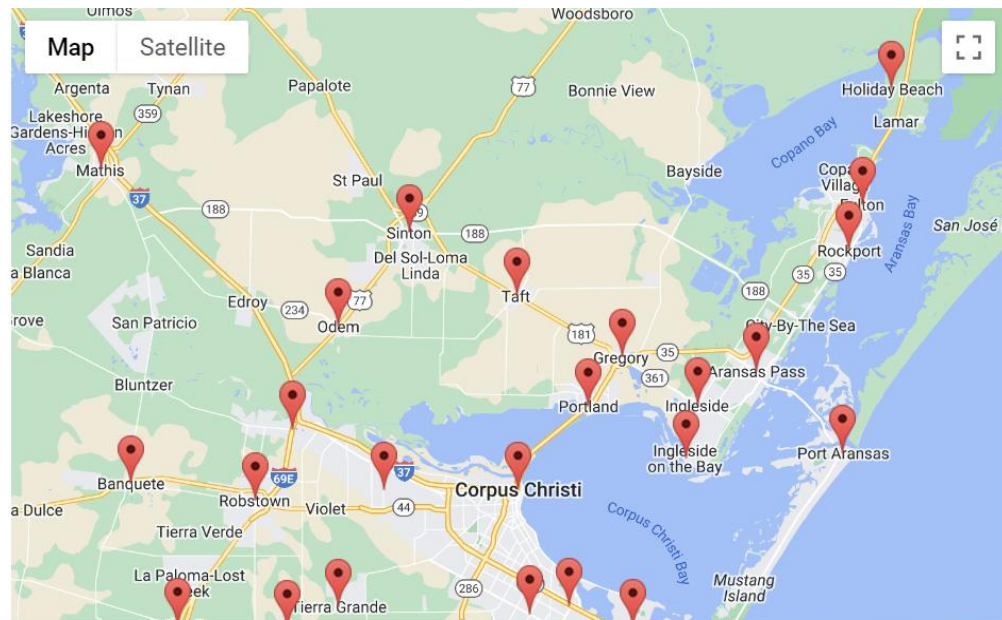


Welcome to the Coastal Bend

[HOME](#) [CONTACT US](#) [ABOUT US](#) [GET INVOLVED](#) [COASTAL BEND JOBS](#) [ECONOMY](#) [AREA RANKINGS](#) [DOWNTOWN](#)

[EVENTS](#)

COASTAL BEND OF TEXAS MAP



Search the site ...

Nueces County, Texas

- Banquete, TX
- Bishop, Texas
- Corpus Christi, Bay Area, TX
- Corpus Christi, Calallen, TX
- Flour Bluff, Corpus Christi, TX
- Corpus Christi Island Living
- Corpus Christi, Northwest, TX
- Corpus Christi South Side, TX
- Driscoll, Texas
- Petronila, Texas
- Port Aransas, Texas
- Robstown, Texas
- Tierra Grande, Texas

San Patricio County

- Aransas Pass, Texas

What We Do:



**ATTRACT NEW JOBS TO
THE REGION**



COASTAL BEND REGION SELLING POINTS

TOP 10 SELLING POINTS TO LEAD WITH



**POSITIVE
BUSINESS
ENVIRONMENT**



**THE PORT OF
CORPUS
CHRISTI**



**HIGHER
EDUCATION**



**WORKFORCE
DEVELOPMENT
& READINESS**



**PASSIONATE
LEADERSHIP**



**COST OF LIVING
& HOUSING**



RECENT WINS



**DEVELOPABLE
LAND**



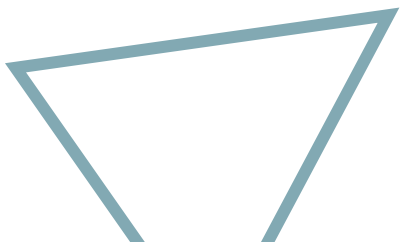
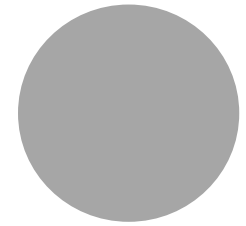
**INFRASTRUCTURE,
UTILITY
AVAILABILITY &
COSTS**



**COMMERCIAL &
REGIONAL
AIRPORTS**

BUSINESS ATTRACTION TRADE SHOWS

Trade Show Name	Location	Date(s)
UAV	Las Vegas, NV	Sept. 5-7th
IEDC	Dallas, TX	Sept. 17-20th
Move America	Austin, TX	Sept. 26-27th
CB to DC	Washington D.C.	Sept. 26-28th
Hydrogen Americas	Washington D.C.	Oct. 2-3rd
TEDC	Houston, TX	Oct. 10-12th
HeloExpo	Anaheim, CA	Feb. 26-29th
MRO	Chicago, IL	April 9-11th
AISTech	Columbus, OH	May 6-9th



Our Qualified Sites

www.ccredc.com/qualifiedsites



MEGASITES



Gandy Megasite

GANDY SPUR RD,
Robstown, Nueces
County, TX, 78380

SOLD TO TESLA



McKamey Megasite

San Patricio County,
Texas

Industrial | 1,300 acres



Blue Bay Megasite

San Patricio County,
Texas

Industrial | 1,400+

Incentives Process

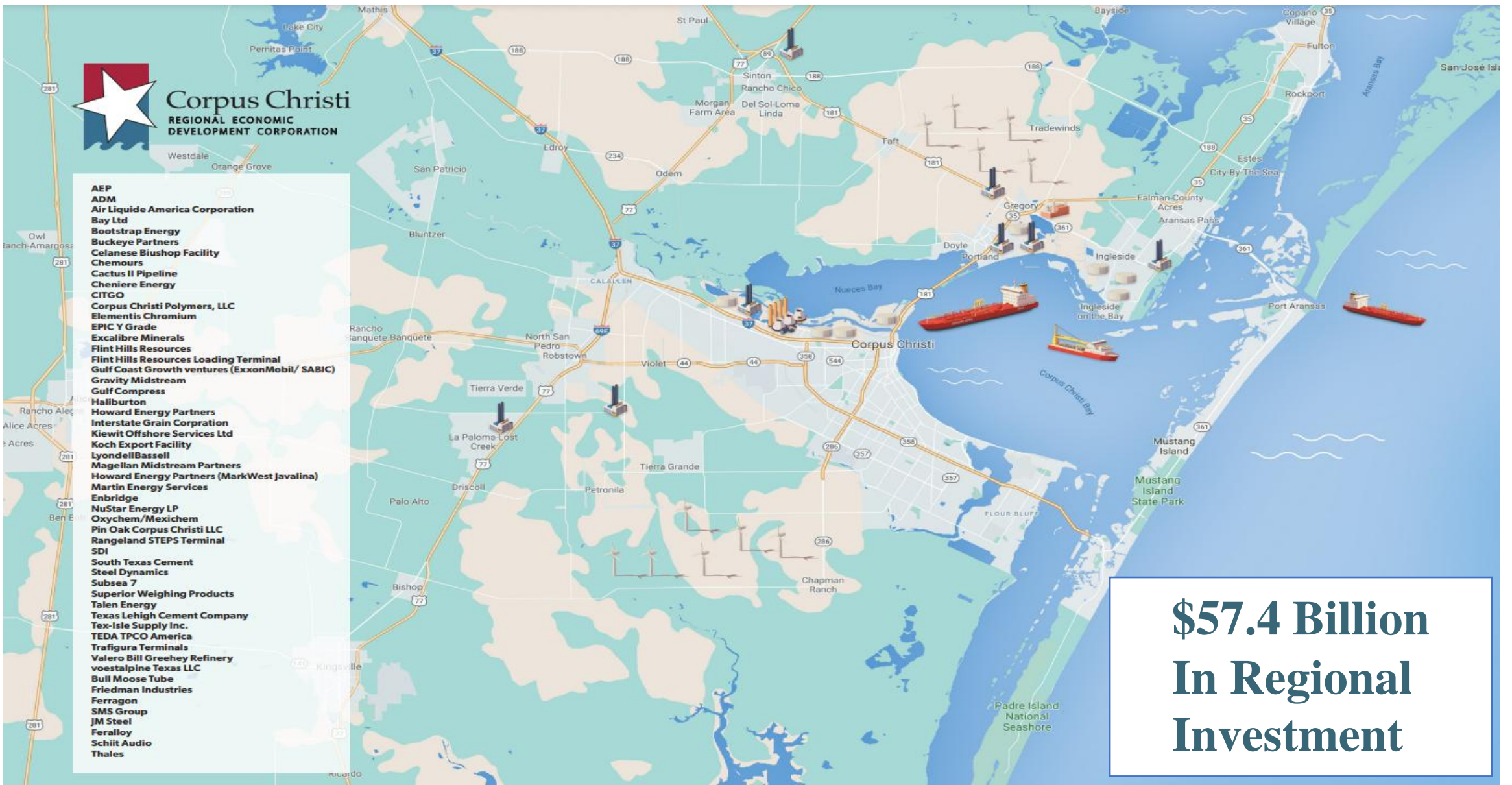




Corpus Christi REGIONAL ECONOMIC DEVELOPMENT CORPORATION

- AEP
- ADM
- Air Liquide America Corporation
- Bay Ltd
- Bootstrap Energy
- Buckeye Partners
- Calanese Biushop Facility
- Chemours
- Cactus II Pipeline
- Cheniere Energy
- CITGO
- Corpus Christi Polymers, LLC
- Elementis Chromium
- EPIC Y Grade
- Excalibre Minerals
- Flint Hills Resources
- Flint Hills Resources Loading Terminal
- Gulf Coast Growth ventures (ExxonMobil/ SABIC)
- Gravity Midstream
- Gulf Compress
- Haliburton
- Howard Energy Partners
- Interstate Grain Corporation
- Kiewit Offshore Services Ltd
- Koch Export Facility
- LyondellBassell
- Magellan Midstream Partners
- Howard Energy Partners (MarkWest Javalina)
- Martin Energy Services
- Enbridge
- NuStar Energy LP
- Oxychem/Mexichem
- Pin Oak Corpus Christi LLC
- Rangeland STEPS Terminal
- SDI
- South Texas Cement
- Steel Dynamics
- Subsea 7
- Superior Weighing Products
- Talen Energy
- Texas Lehigh Cement Company
- Tex-Isle Supply Inc.
- TEDA TPCO America
- Trafigura Terminals
- Valero Bill Greehey Refinery
- voestalpine Texas LLC
- Bull Moose Tube
- Friedman Industries
- Ferragon
- SMS Group
- JM Steel
- Feralloy
- Schiit Audio
- Thales

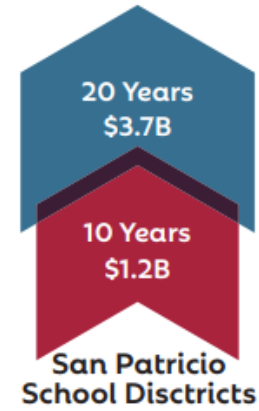
**\$57.4 Billion
In Regional
Investment**



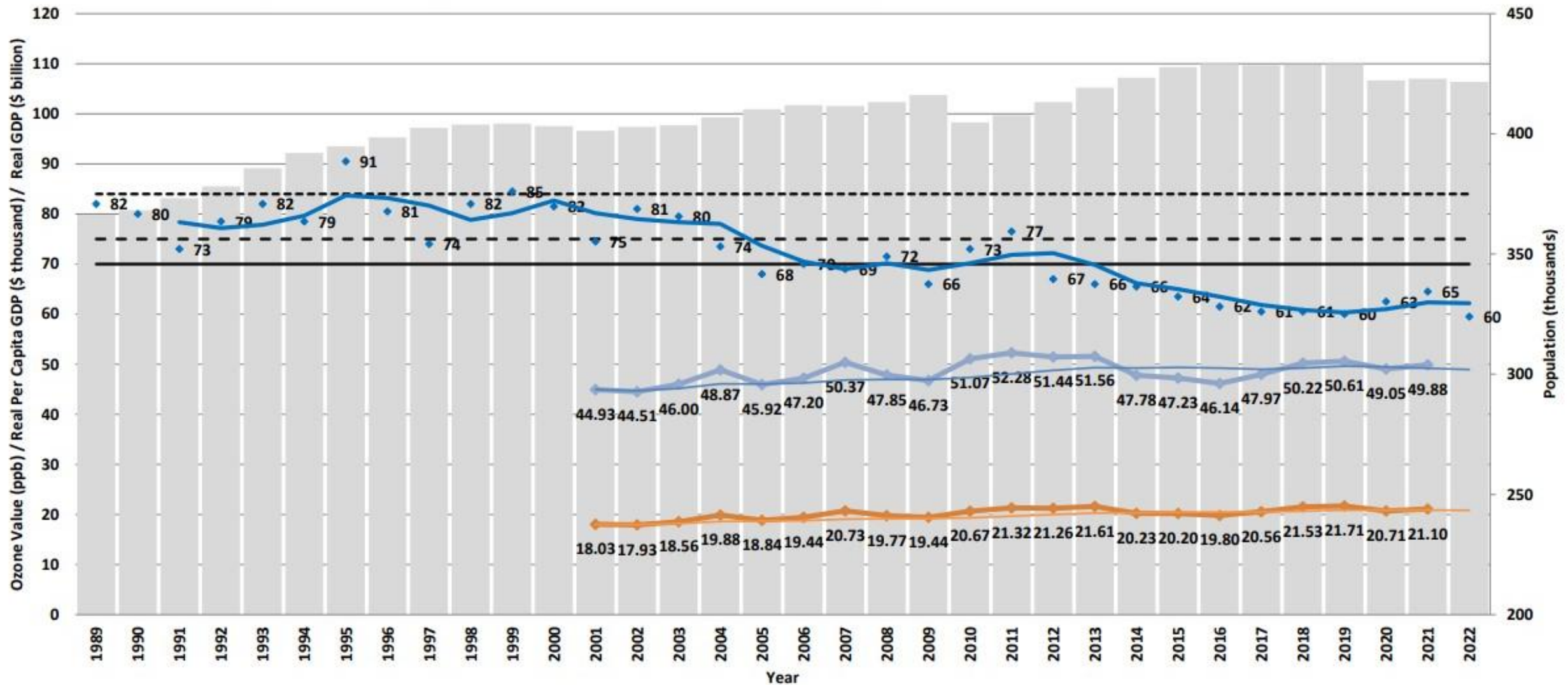
Community Impact

\$52 Billion in Cap Ex: What it means for our local taxing entities?

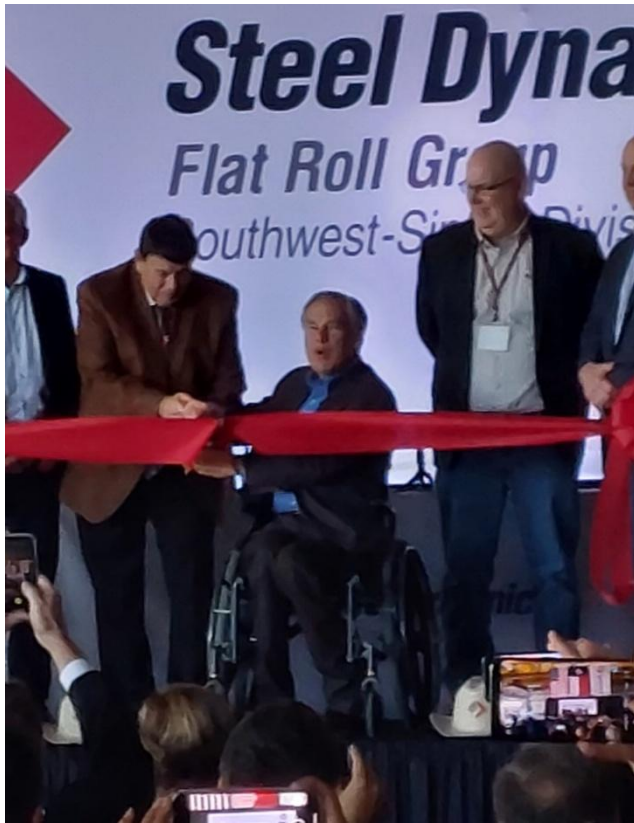
These taxes are net of any incentive offered. Assumed the time to complete schedule doesn't move appreciatively.
City of Corpus Christi includes the industrial district PILOT payments



Corpus Christi Regional Airshed Ozone Values & Corpus Christi MSA Data - 1989 to 2022



- CC MSA Population (right axis)
- 1997 8-hour Ozone NAAQS
- ◆ CAMS 4 & 21 Average
- 2008 8-hour Ozone NAAQS
- 2015 8-hour Ozone NAAQS
- ◆ CC MSA Real Per Capita GDP
- 3 per. Mov. Avg. (CAMS 4 & 21 Average)
- 10 per. Mov. Avg. (CC MSA Real Per Capita GDP)
- ◆ CC MSA Real GDP
- 10 per. Mov. Avg. (CC MSA Real GDP)



RECENT PROJECT WINS

LIGHTHOUSE
POINT

TESLA
LITHIUM

GULF COAST
GROWTH
VENTURES

STEEL
DYNAMICS

Target Industries

Strongest Business Case for New Investment Industries

Small and Mid-Size Manufacturing

Capitalize on downstream supply chain opportunities in production. Focus on high cost and highly regulated markets for recruitment.



Plastic Products Manufacturing

Attract plastic product manufacturers based on the existing and rapidly growing plastic feedstock production in the area.



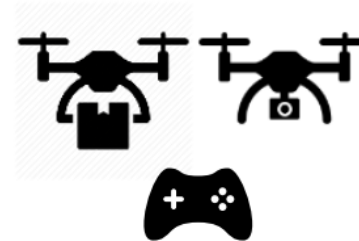
Fabricated Metal Products Manufacturing

The arrival of Steel Dynamics in the Coastal Bend area represents a once in a generation opportunity to establish a new steel products ecosystem and supply chain.



Aerospace Manufacturing (UAV Niche)

Capitalize on opportunities to capture a share of the rapidly growing unmanned aerial vehicle market, but don't exclude marine and road vehicles.



CCREDC Project Pipeline

16 Active Projects

1,580 Jobs

\$16.6 B Cap Ex

Industry	Capital Investment	Jobs
Green Industry	\$5.3 Billion	620
Steel/Metal Fabrication	\$11.2 Billion	1400
Advanced Manufacturing	\$10 Million	TBD
Entertainment	\$0.5 Million	10
Aviation	\$400 Million	200
Aqua Farming	\$110 Million	50



Corpus Christi

REGIONAL ECONOMIC
DEVELOPMENT CORPORATION

WELCOME TO
CORPUS
CHRISTI
TEXAS



The Port of Corpus Christi: An Energy Market Leader

November 30, 2023

ACIT South Texas Economic Outlook Luncheon

Omar Garcia | Chief External Affairs Officer

Presented by



PORT CORPUS CHRISTI®

The Energy Port of the Americas

By the Numbers

#1



U.S. Port by Annual Revenue Tonnage

#1



U.S. Crude Oil Gateway

#2



U.S. Port in LNG Exports | Estimated 808 Bcf in 2022

30,000+



Acres of Land Managed

\$400M

Per day goods value movement

\$65B

In private investment over the last 8 years

95,448 FTE



Direct, indirect, and related positions | Over 40% of regional workforce

7,736



Vessels moved in 2022

#2



U.S. Port in LNG Exports
Estimated 808 Bcf in 2022

Sources: U.S. Census Bureau; Port of Corpus Christi commercial data; Dr. Jim Lee, South Texas Economic Development Center at Texas A&M University-Corpus Christi

The Energy Port of the Americas

Source: South Texas Economic Development Center at Texas A&M University-Corpus Christi

Port of Corpus Christi Economic Impacts in Texas

Economic Impact:

\$18B

\$13.4 billion for CC metro area

Personal Income:

\$6B

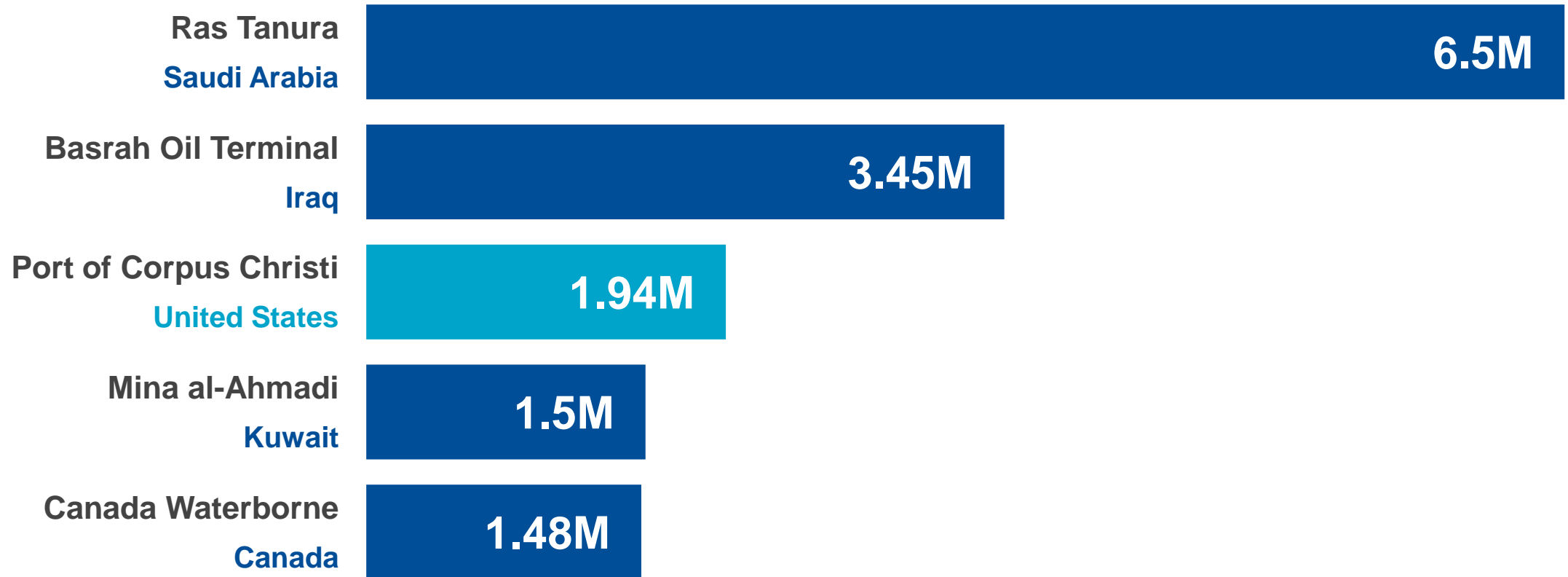
\$4.8 billion for CC metro area
28% increase from 2015 for Texas

State and Local Taxes:

\$431M

Top 5 for Crude Oil Exports (bpd)

In 2022



The Port and its Customers

Hitting Milestones
Together

17X

Increase in Crude Exports
since federal ban lifted in late 2015

18.0M

Tons Moved in August 2023
New monthly tonnage record

187.9M

Tons of Goods Exported
in 2022 (New annual record)

52.0M

Tons Moved in Q3 2023
New quarterly tonnage record

2.43M

Barrels of Crude Oil per
Day in September 2023
New monthly record

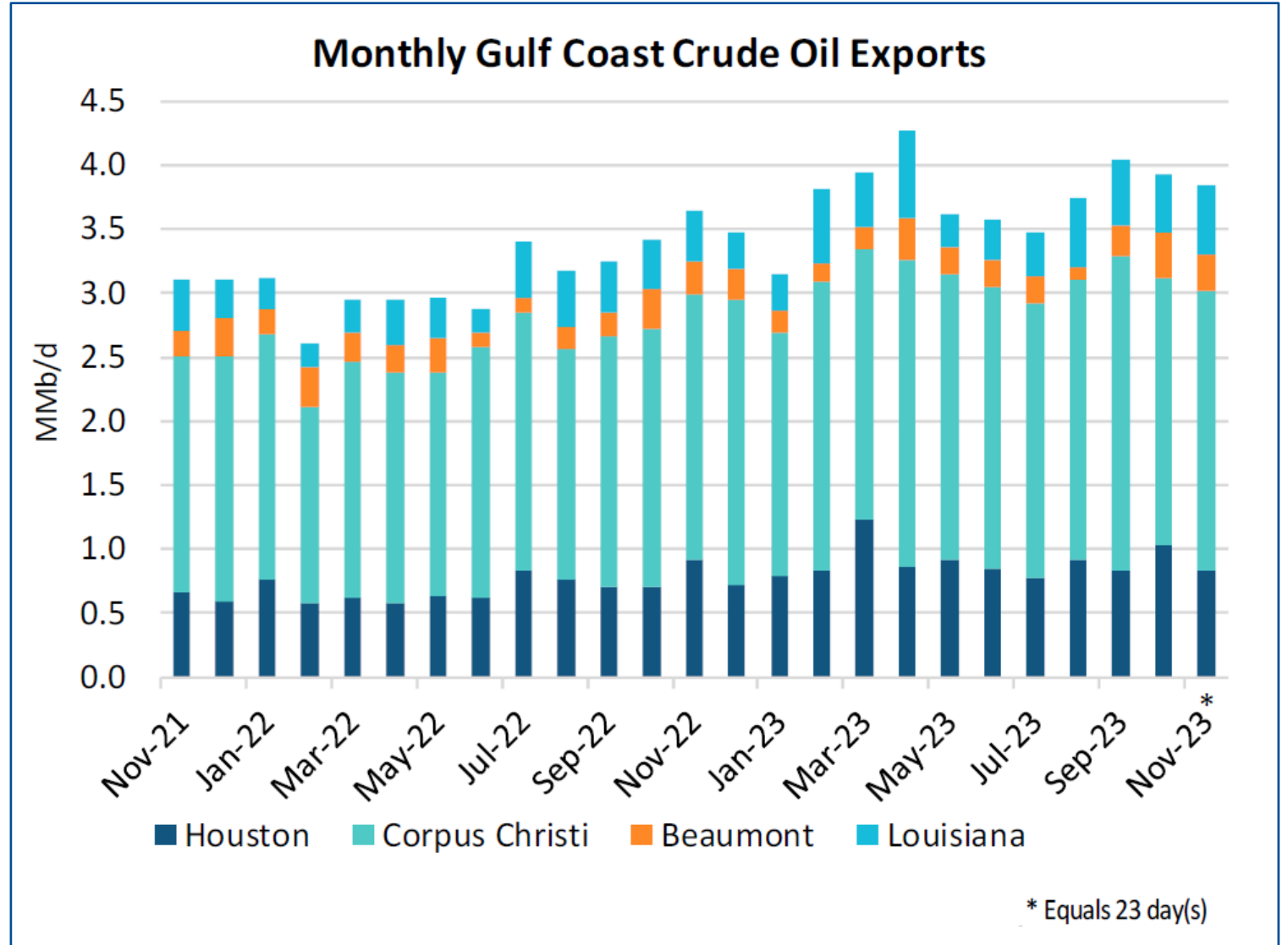


PCCA Crude Oil Outbound/Exports

2016-2023 YTD (Barrels Per Day-BPD)



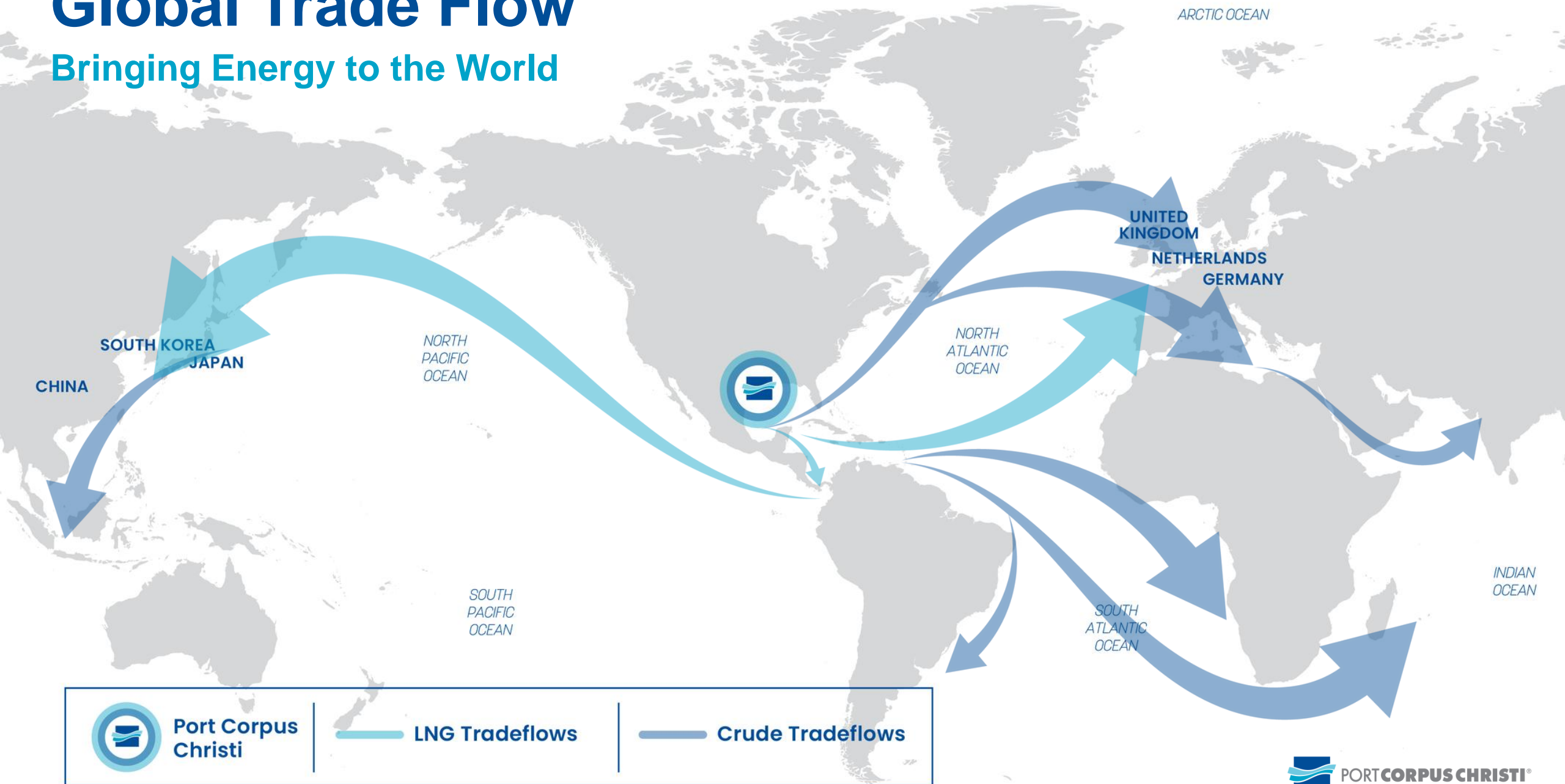
Leading the Way in Crude Oil Exports



Source: RBN Energy

Global Trade Flow

Bringing Energy to the World



Prolific Energy Gateway



\$65 Billion Capital Investments

(\$12 Billion Foreign
Direct Investments)



#1 Priority – The Channel Improvement Project

Main Channel and Barge Lane Elements

Project Cost

Current Authorized Costs

\$681.61M

Federal

\$406.34M

PCCA

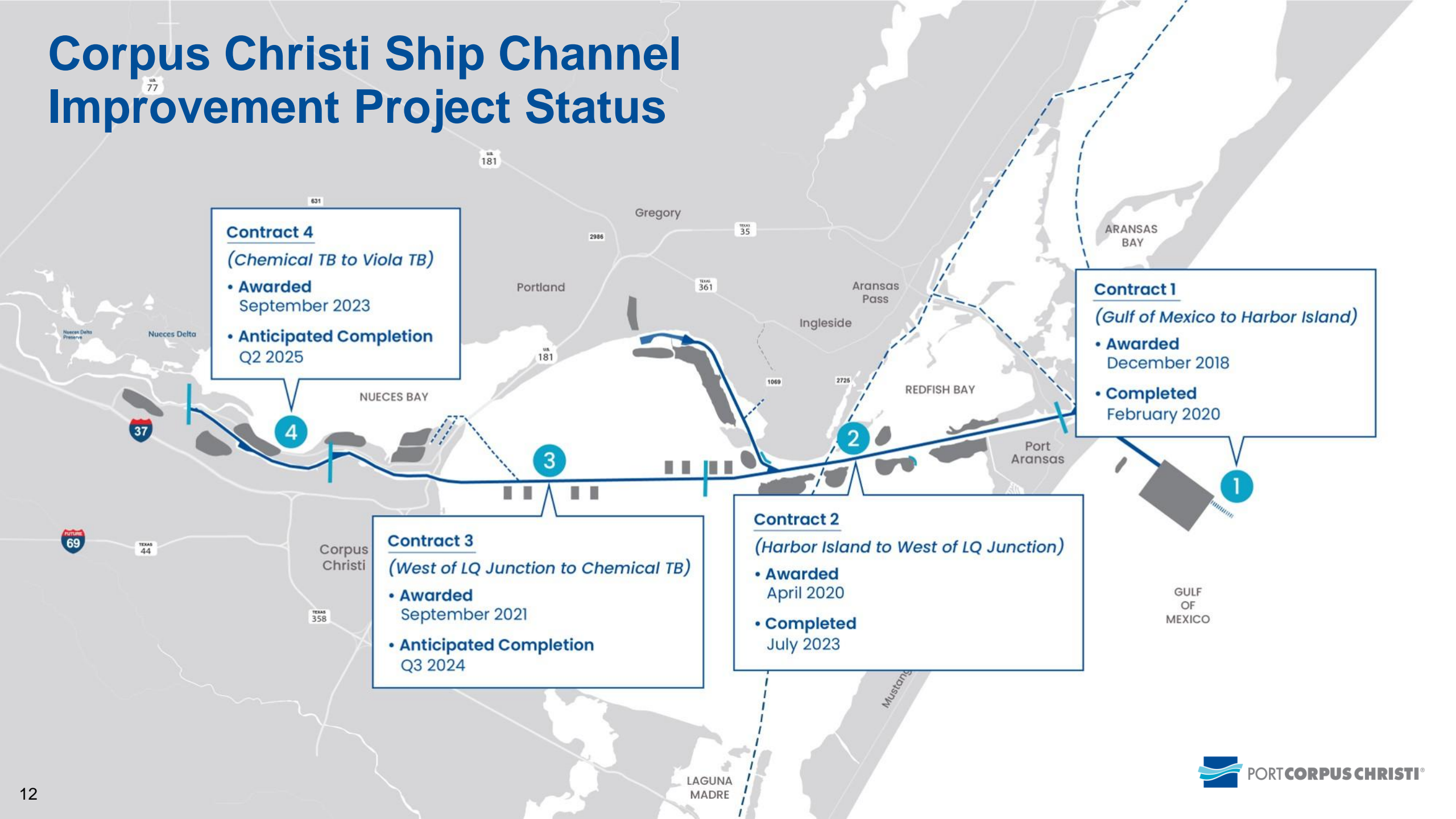
\$275.27M

Project Close Out Amount

Consolidated
Appropriations Act of 2023

\$157.3M

Corpus Christi Ship Channel Improvement Project Status



Horizons Clean Hydrogen Hub

Will connect large-scale clean H₂ production in the West South-Central U.S. with in-region, extra-regional and international end-users.



HORIZONS
CLEAN HYDROGEN HUB
PORT **CORPUS CHRISTI**



Existing Operations

Port customers already use H₂ as part of the refining process



Energy Transition

Other industries may use H₂ to help decarbonize natural gas power streams



Pipelines

Horizons Clean Hydrogen Hub projects will use and add to 110 miles of existing H₂ pipelines



Partnerships

Partners include longstanding Port customers, along with well-capitalized and Port-vetted startups

Learn more at horizonshydrogenhub.com

Horizons Clean H2 Hub

Port of Corpus Christi Encouraged by DOE to Submit Full Application for Hydrogen Hub Proposal

Jan 09, 2023



Corpus Christi, TX, USA – The US Department of Energy (DOE) Office of Clean Energy Demonstration has encouraged the Port of Corpus Christi Authority (Port of Corpus Christi) to submit a full application for its Horizons Clean Hydrogen Hub (HCH2) through the [Regional Clean Hydrogen Hubs Program](#).

The Port of Corpus Christi, as a landlord port authority and the owner of the most improved, most efficient ship channel on the U.S. Gulf Coast, is the prime applicant for the HCH2 and is the common denominator to each of the roughly two dozen discrete clean hydrogen production projects in the proposed Hub. The HCH2 Concept Paper, submitted to the DOE on November 7, names around 30 private sector team members as owners, developers and/or operators, offtakers, and end users of various hydrogen value chain projects and supporting infrastructure, including but not limited to:

- Ambient Fuels
- AMMPower
- Apex Clean Energy
- Ares Management Infrastructure Opportunities funds
- Avangrid
- Avina Clean Hydrogen
- Big Hill



By the Numbers:

- \$7B in federal funding for 7 Hubs
- Port was 1 of 3 designated “Hub Alternates”
- \$993M requested
- 4-phased, 8-year (+) Hub implementation
- 24+ named private sector partners
- 11 named sub-recipients
- 12+ affiliated projects/activities

Thank you



PORTCORPUS CHRISTI®

